

State of Wyoming Corner Record

(In compliance with the *CORNER PERPETUATION AND FILING ACT*, Wyoming Statutes, 1997 Section 33-29-140 et. seq., and the Rules and Regulations of the Board of Professional Engineers and Professional Land Surveyors)

Reverse side of this form may be used if more space is needed.

Record of original survey and citation of source of historical information (if corner is lost or obliterated). Description of corner monumentation evidence found and/or monument and accessories established to perpetuate the location of this corner. Sketch of relative location of monument, accessories, and reference points with course and distance to adjacent corner(s) (if determined in this survey). Method and rationale for reestablishment of lost or obliterated corner.

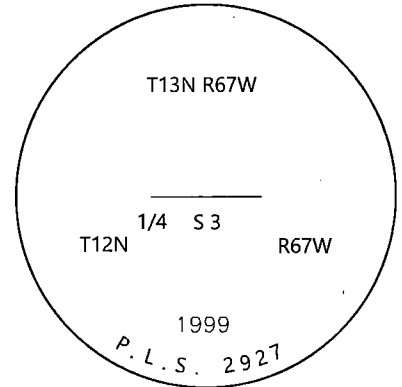
LOCATION: North Quarter Corner of Section 3, T12N, R67W, 6th Principal Meridian, Laramie County.

RECORD: GLO - Not set in GLO survey

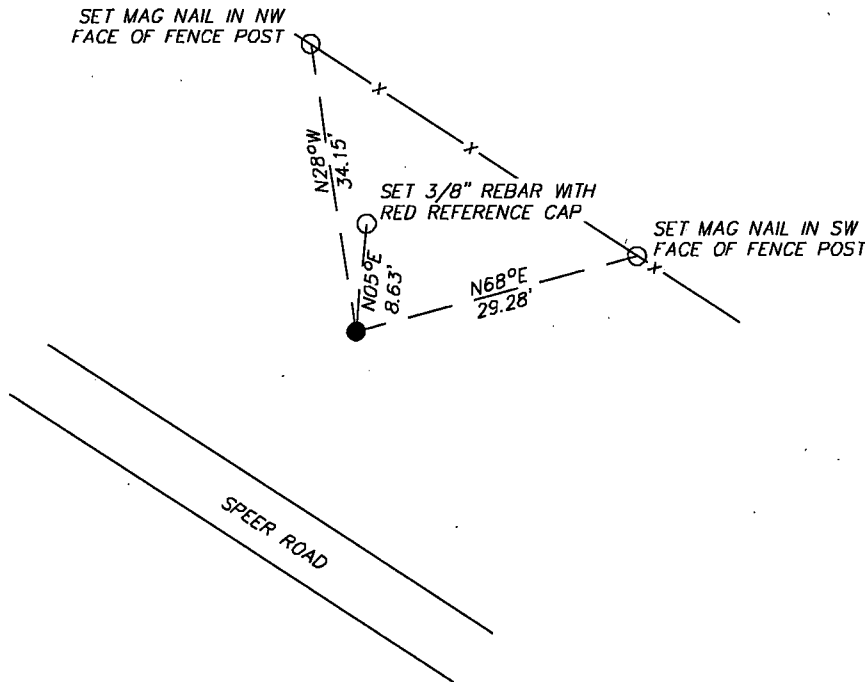
1999 - Paul A. Reid found the original south 1/4 corner stone to section 34, T13N, R67W laying loose on the ground in the area of a constructed access road. The stone was a marked 11" x 8" x 6" pink granite stone. He set a 2.5" x 30" aluminum pipe with a 3.25" aluminum cap stamped LS 2927 at the midpoint between the original monuments found at the NW and NE corners of section 3, leaving loose stone next to the set monument and added a steel fence post as a witness north.

RECOVERED: 2019 - Westwood Professional Services found a 3.25" aluminum capped monument stamped LS 2927, with 11" x 8" x 6" stone scribed "1/4" and witness fence post.

RESET: Accepting location of the monument as the location of the corner. Ties are set as shown.



Monument Inscription



Date of Field Work: 9/11/2019

Office Reference: 22237.01

Cross Index Plat

	1	2	3	4	5	6	7	8	9	10	11	12	13	14	15	16	17	18	19	20	21	22	23	24	25		
A																											
B																											
C			6		5		4		3		2		1														
D																											
E																											
F																											
G			7		8		9		10		11		12														
H																											
J																											
K																											
L			18		17		16		15		14		13														
M																											
N																											
O																											
P			19		20		21		22		23		24														
Q																											
R																											
S																											
T			30		29		28		27		26		25														
U																											
V																											
W																											
X			31		32		33		34		35		36														
Y																											
Z																											
	1	2	3	4	5	6	7	8	9	10	11	12	13	14	15	16	17	18	19	20	21	22	23	24	25		

Firm/Agency, Address

Westwood Professional Services
3701 12th St. N; Ste. 206
St. Cloud, MN 56303

Telephone Number: (320)-253-9495

This corner record was prepared by me or under my direction and supervision.

SEAL & SIGNATURE



REC# #: 775795
 RECORDED 4/15/2020 AT 10:13 AM BK# 2668 PG# 227
 Debra K. Lee, CLERK OF LARAMIE COUNTY, WY PAGE 1 OF 1

Corner Name North Quarter Corner Section 3, T 12 N, R 67 W, 6th P.M.

Cross-Index No.: A-15

County: Laramie Wyoming

SBRPEPLS/PLSW: March 1994; PLSW January 1998